

SAFEHABITUS International Policy Seminar

“Mental health and well-being of farmers”

European Parliament, Brussels 25/01/2024



santé
famille
retraite
services

MSA is a private professional organization,
in charge of a public mission: the social security system management,
for the benefit of the rural and agricultural population



☞ **Solidarity:** Social goal and redistributive system

☞ **Responsibility:** Management by the beneficiaries
/stakeholders themselves



☞ **Democracy:** Election of boards of administration by beneficiaries
/stakeholders

« one stop shop »



decentralized organisation

CCMSA + 35 MSA



democratic representation

Independent Farmers, salaried Workers, employers

Board Members election every 5 years

national level: 27

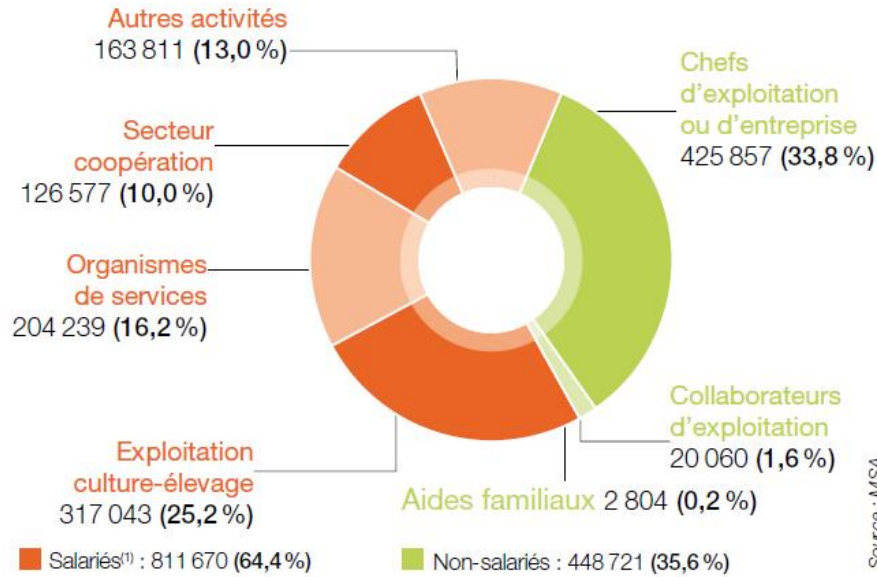
territorial level: 2 000

local level: 27 000



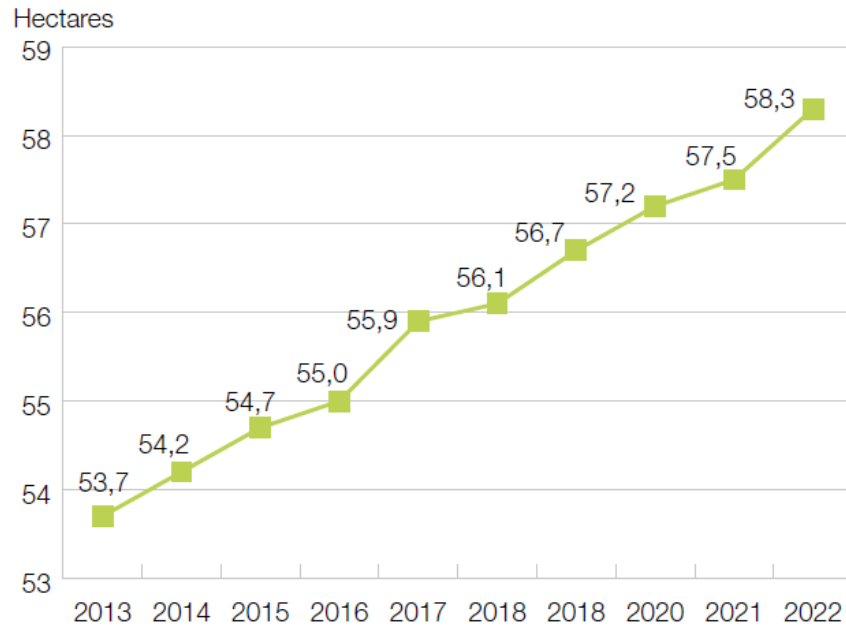
local participatory management

Figures

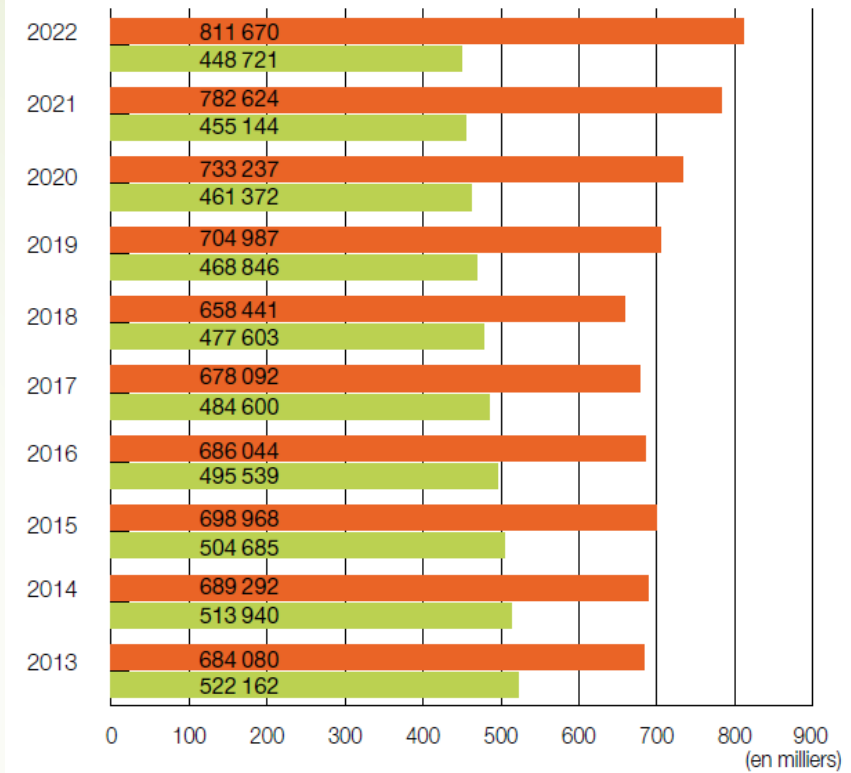


Source : MSA

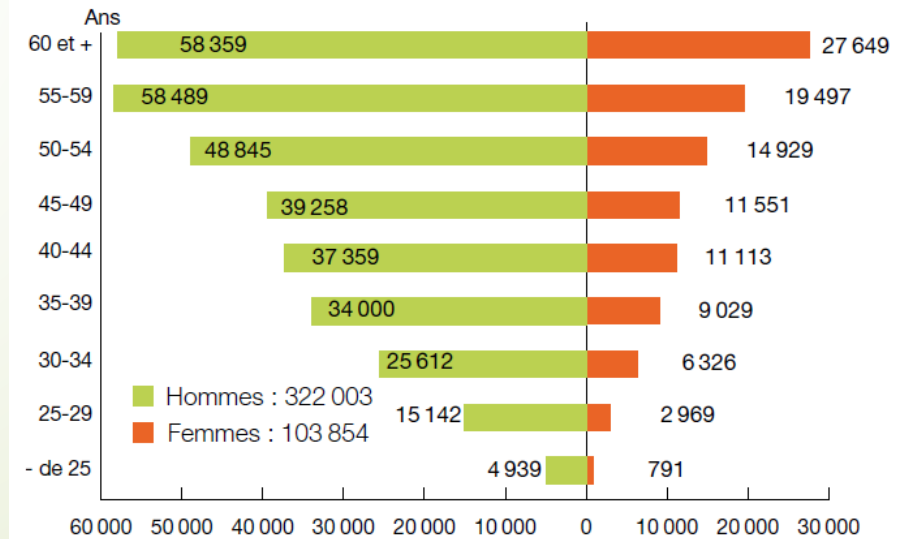
Agricultural activities by status and sector Average farm area



Source : MSA



Change in farm workforce



Preventing the farmers malaise in France



- Since the 1970s, studies shows a higher likelihood of suicide in the agricultural population. Between 1968 and 1999, male farmers were 1,5 times more likely than the general population to commit suicide (1,9 times for female farmers)
- The agricultural population accounted for 2 suicides/day in 2015
- The distress experienced by the agricultural population can be linked to many factors, including :
 - Economic factors (low revenues, debt, higher charges, reduction of the financial assistance from the state/the EU ...)
 - Personal factors (transmission of farms, exhaustion due to the long hours and difficulty to take rest/holidays ...)
 - Societal factors (lack of recognition, feeling misunderstood in front of the pressure to change the agricultural model of production, ...)

As the social security regime for the french agricultural world, the MSA has long been active in distress and suicide prevention.

The MSA program and the interministerial plan

Scope

Scope of the interministerial plan

targets agricultural holders/farmers as well as employees in the economic sector of agricultural production.

to detect, prevent and support agricultural production workers.

These populations suffer from high rates of distress and suicidal risk.

The plan involves 40+ actors at the local or national level (institutional or private, including regional health agencies, Chambers of Agriculture, banks, Orders of medical professionals and associations such as Solidarité Paysans).

The MSA holds a prominent role in this plan.

Agricultural holders/farmers

Agricultural production employees

Agricultural working population
(not only production sector)

At risk populations : Youth, students, seniors and unemployed

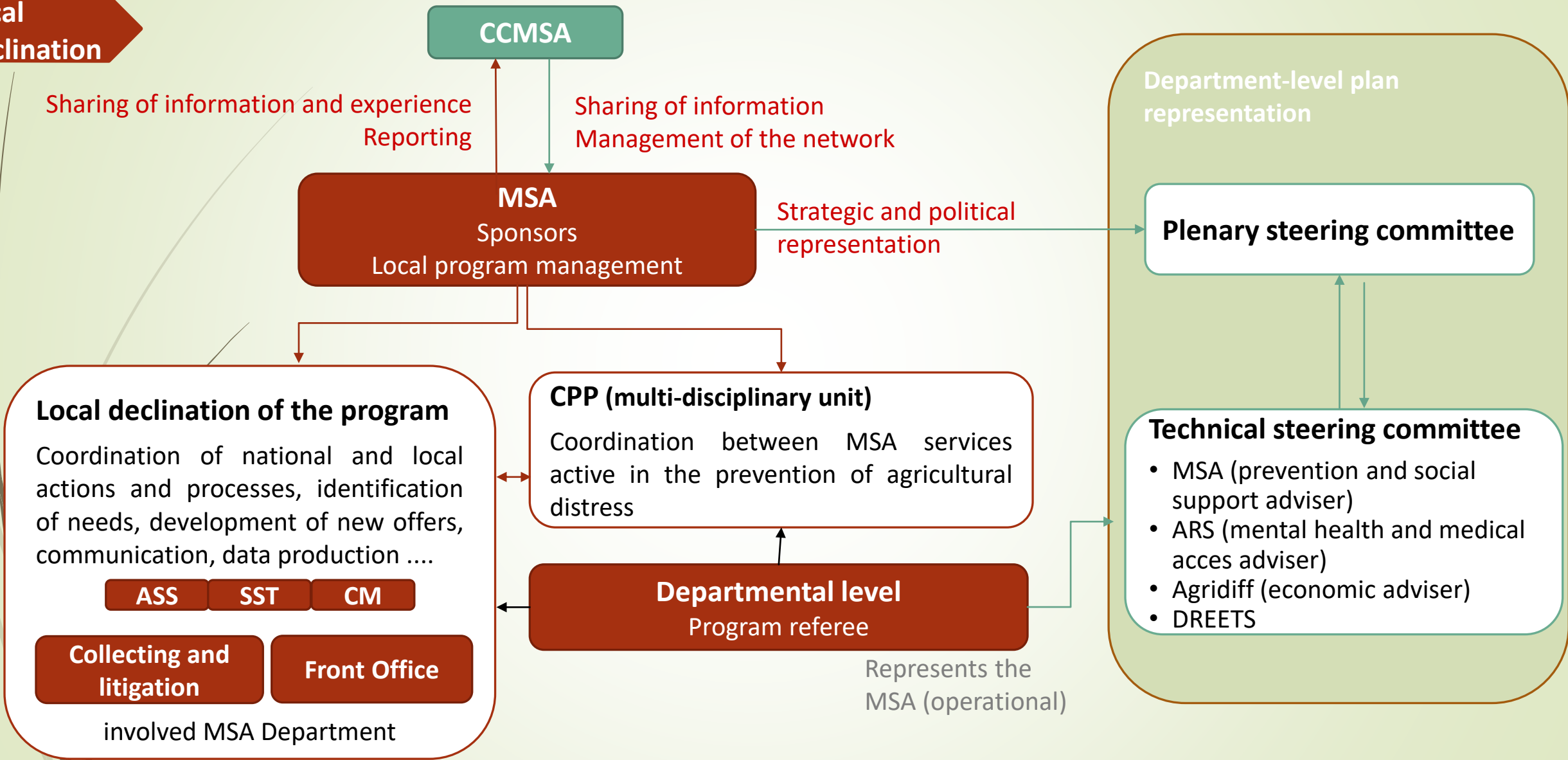
Scope of the MSA program

Detect, prevent and support the entire agricultural population in distress.

Act with employees and the entire agricultural workforce, as well as populations identified locally or nationally as presenting a higher risk of distress or suicide.

Promote actions and processes aimed at populations that its partners do not target.

Local declination



Distress prevention



2011

First national agricultural suicide prevention plan

2012

starts to organize multi-disciplinary prevention units

2013

The first Sentinels are trained

2014

launches Agri'Ecoute (free telephone platform)

2015

2d suicide prevention plan

2016

Financial coverage of replacement + holidays
Tenders to support local projects in distress and suicide prevention

2020

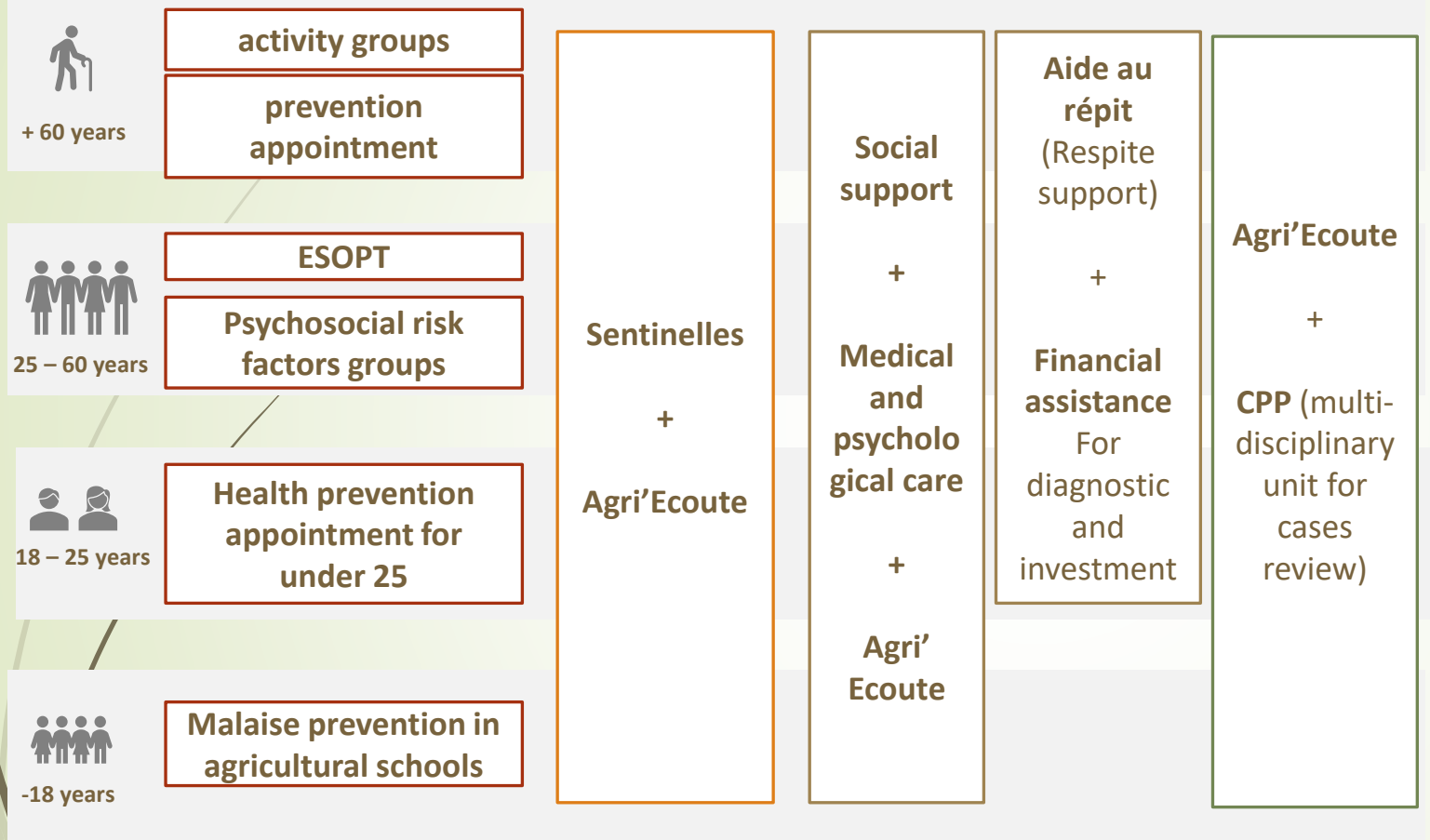
starts to work on a program for distress prevention

2021

is awarded a central role in the interministerial plan for prevention of suicide and distress in the agricultural population

Distress prevention

A step by step built program : few examples of actions



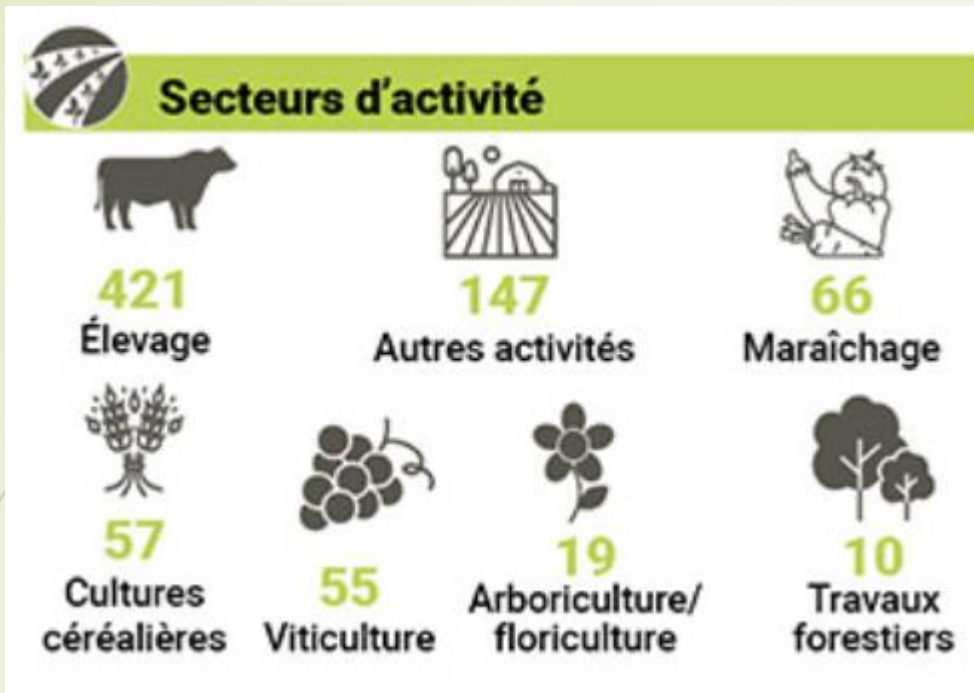
the MSA develops through the years many actions in four areas :

- **Prevention** : to intervene before first signs of distress and help people to handle the issue
- **Detection** : to provide support as soon as possible for people in need
- **Support** : to assist people whose situation of distress needs professional help
- And **orientation** : to provide the best possible support, included external partners

The MSA has also created actions targeted for **specific populations and needs** such as age groups or working status (farmers, employees, retired population...).

Actions mostly come from our **local professionals** who first identify new needs and/or new crisis to address.

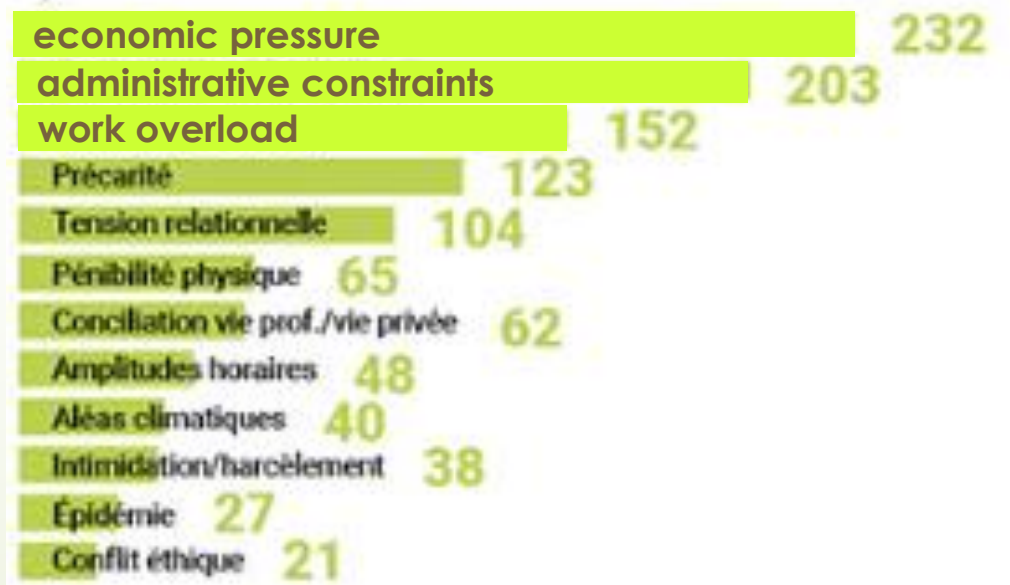




personal risk factors



occupational risk factors



**Thanks you for your respectful
attention**

Sources : Ms. Raphaelle Desrousseaux, Ms. Mathilde Gervaisot, CCMSA, France



santé
famille
retraite
services

L'essentiel & plus encore